

# **Pictures to facilitate participation in the game – Language-related difficulties**

---

FAMILIES



# **Pictures to facilitate participation in the game – Language-related difficulties**

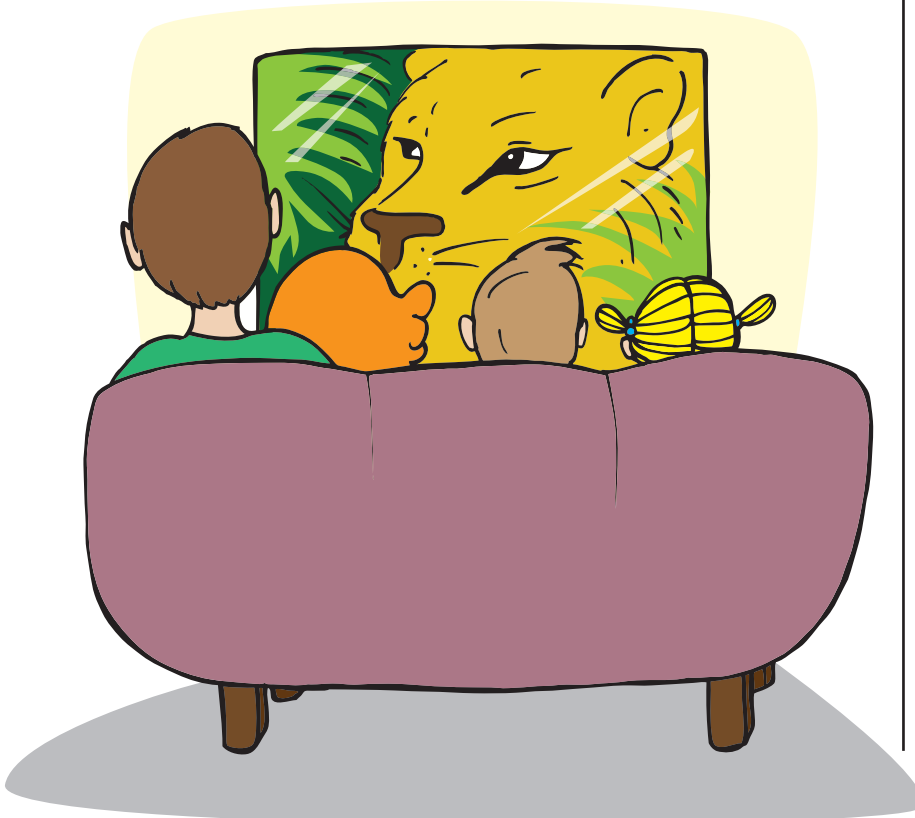
---

## **FAMILIES**

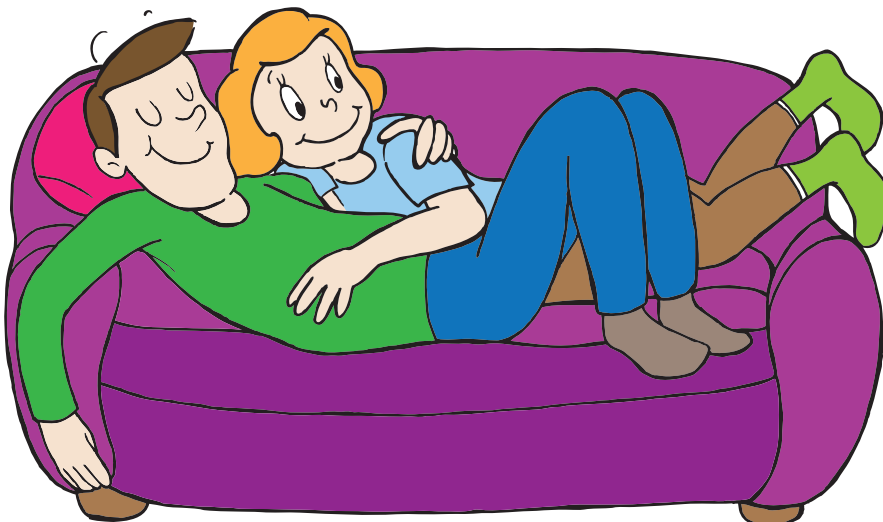
# Household chores



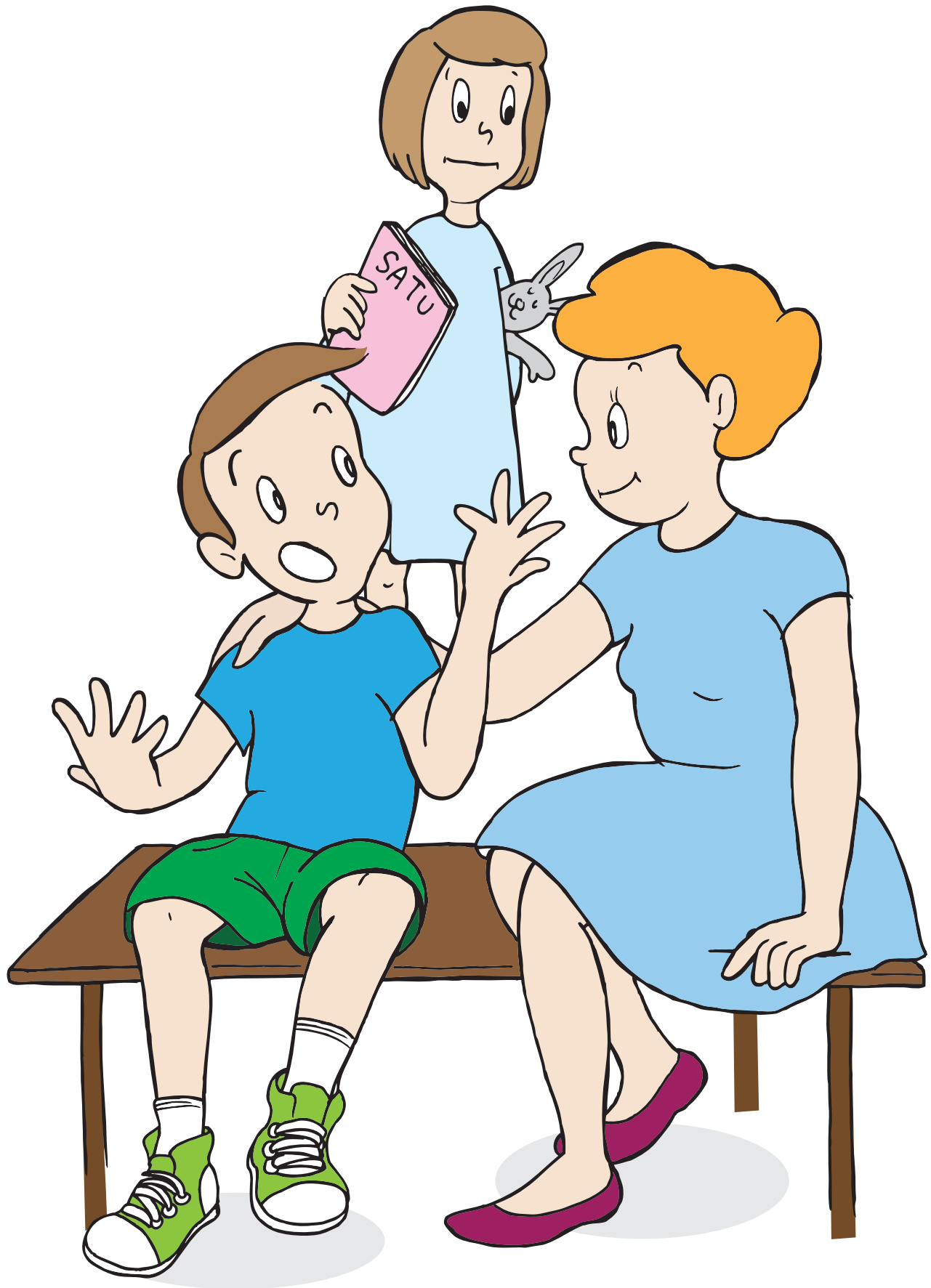
## Ability to relax



## Own space and time



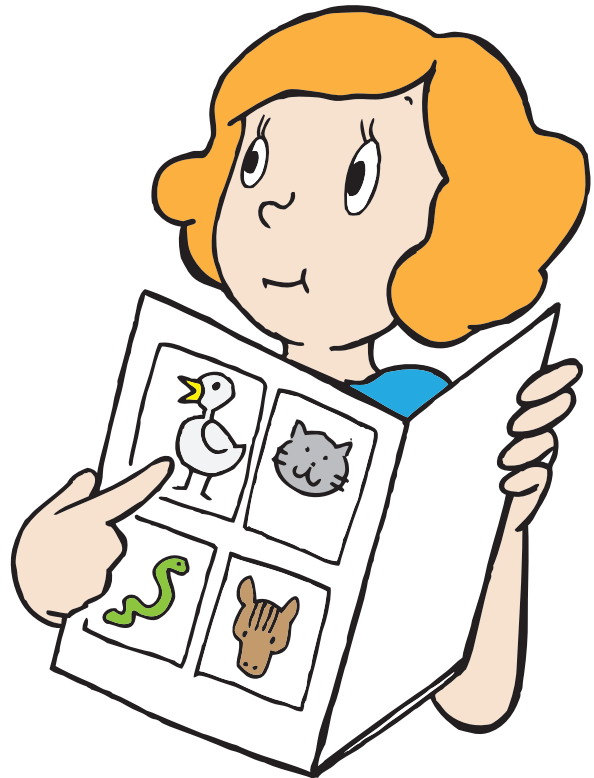
## Interaction



## Understanding others



## Using support measures

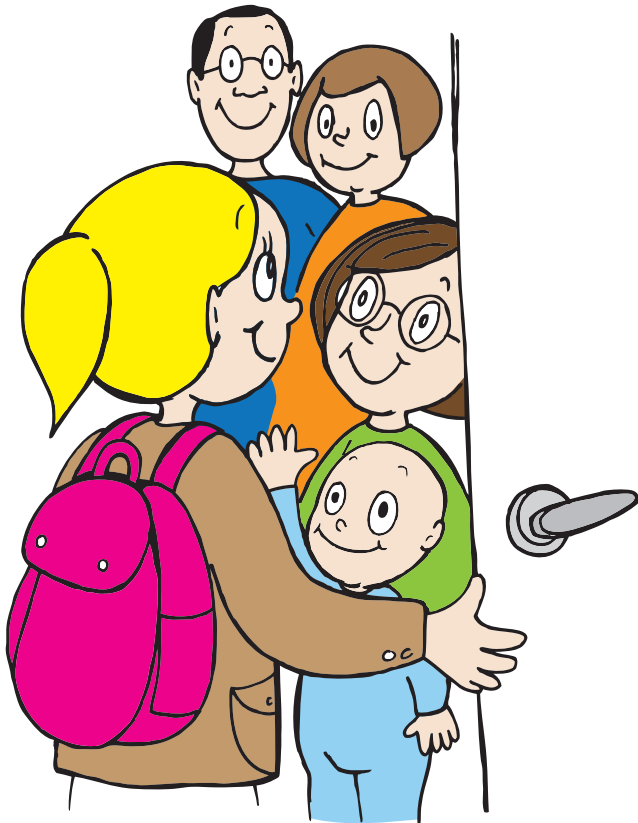




## Receiving help



FAMILY WORKER

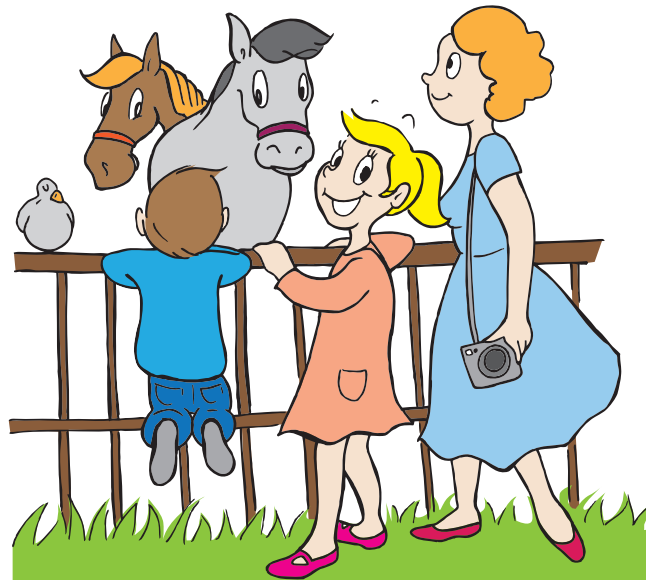


SUPPORT FAMILY

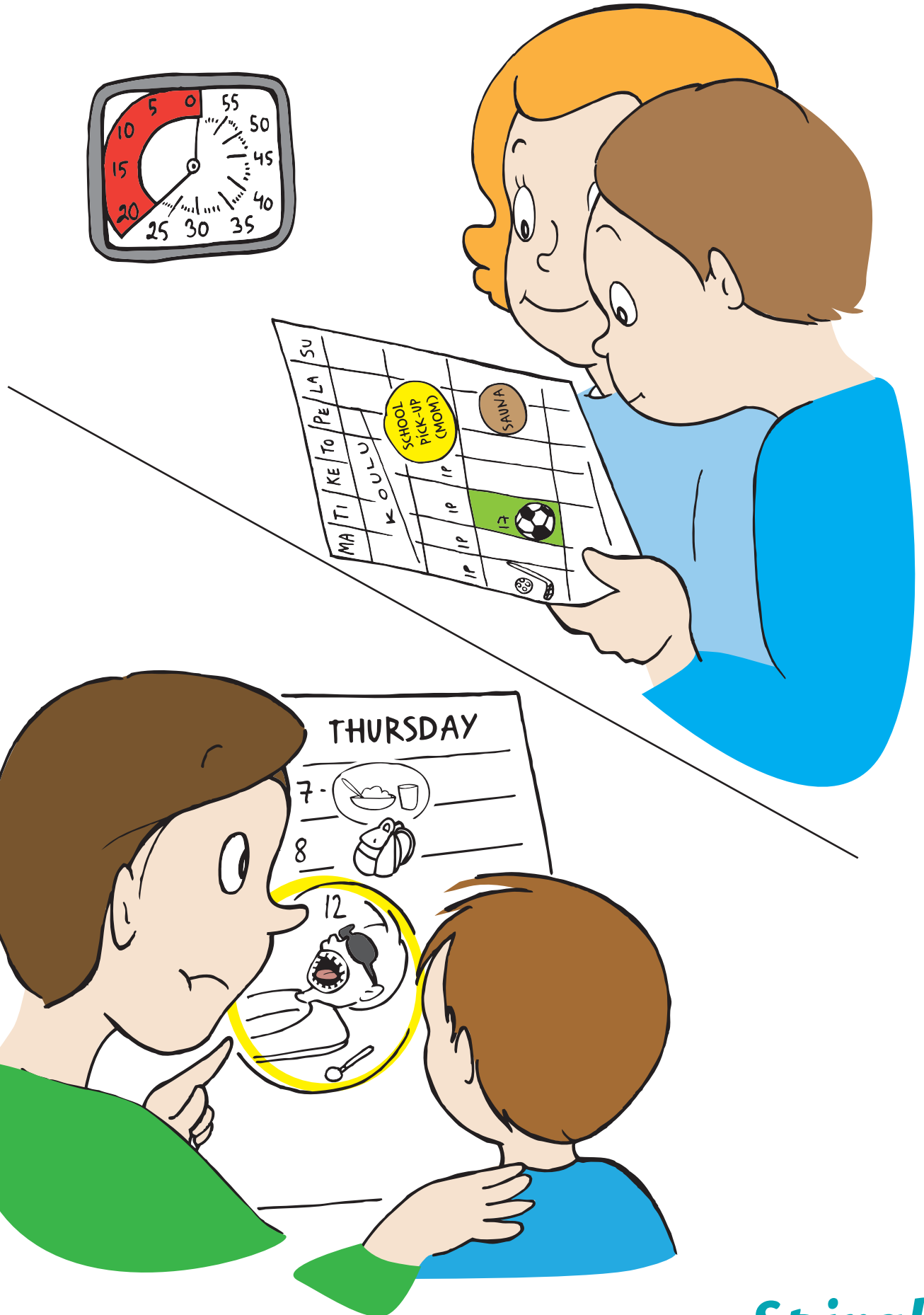


OTHER FAMILY MEMBERS

## Doing things together



# Time management



## Expressing emotions



JOY



SORROW



ANGER



FEAR

## Moving around outside the home



**TRAFFIC**

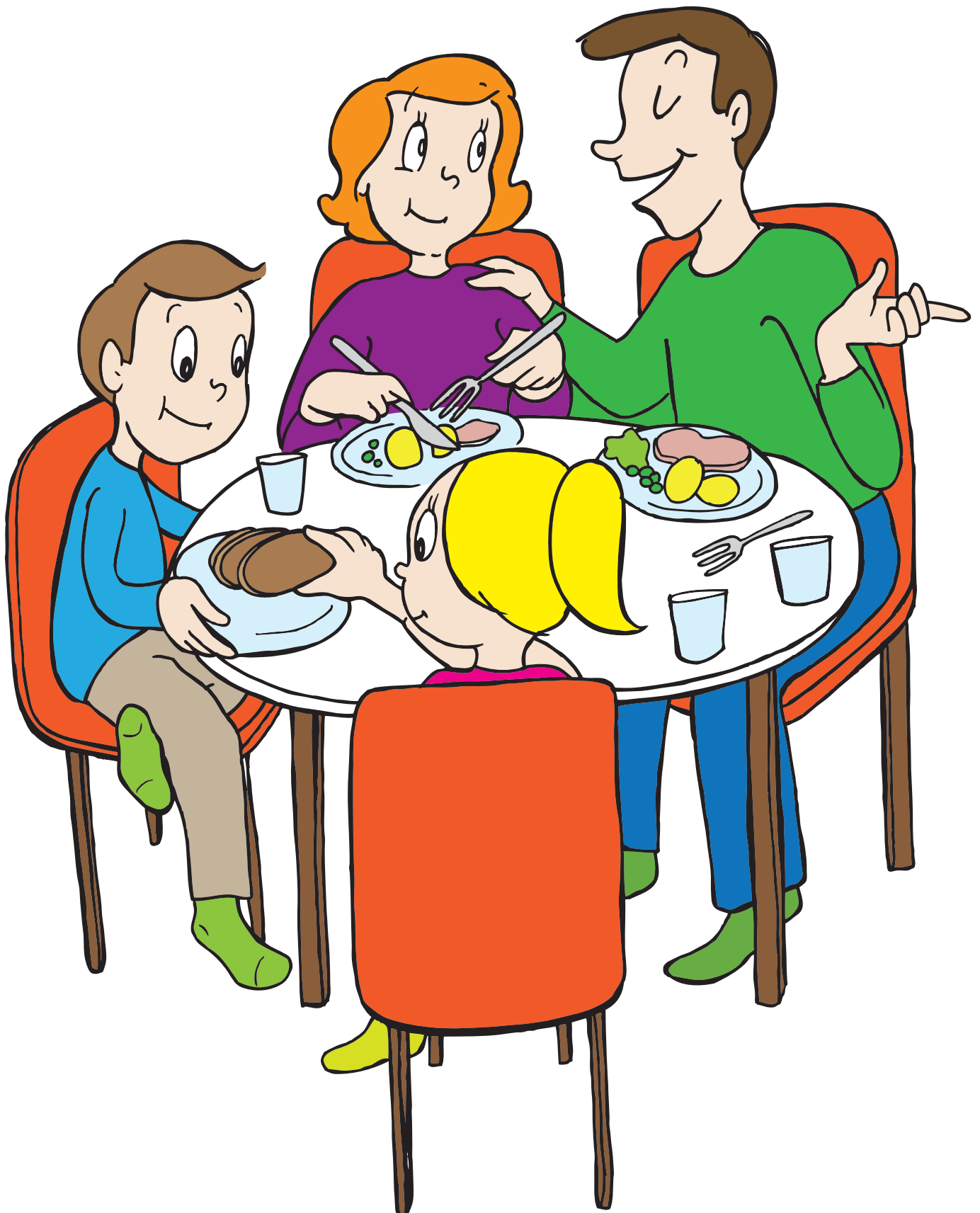


**SHOPPING**

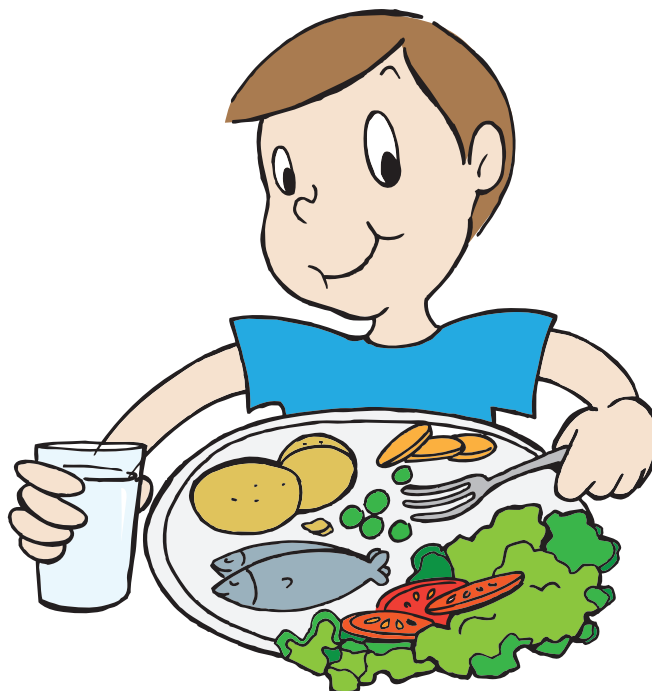


**TRAFFIC**

## Eating together

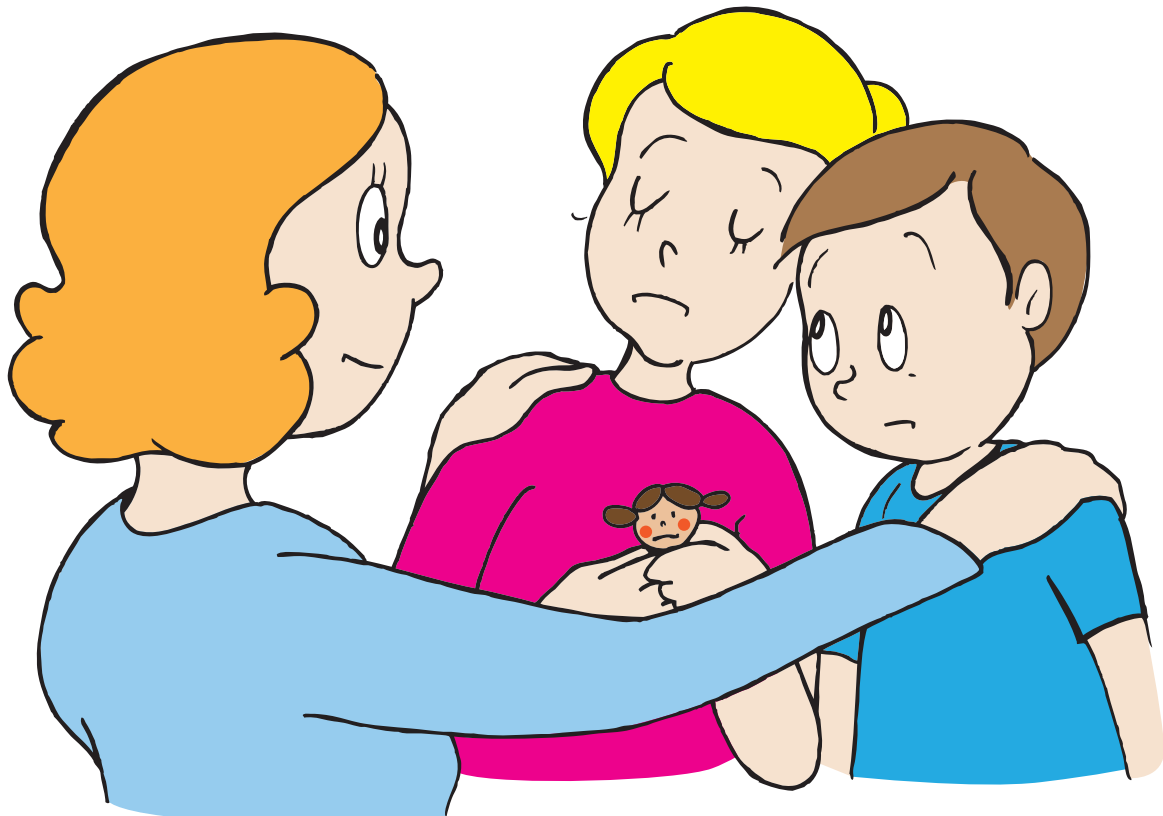
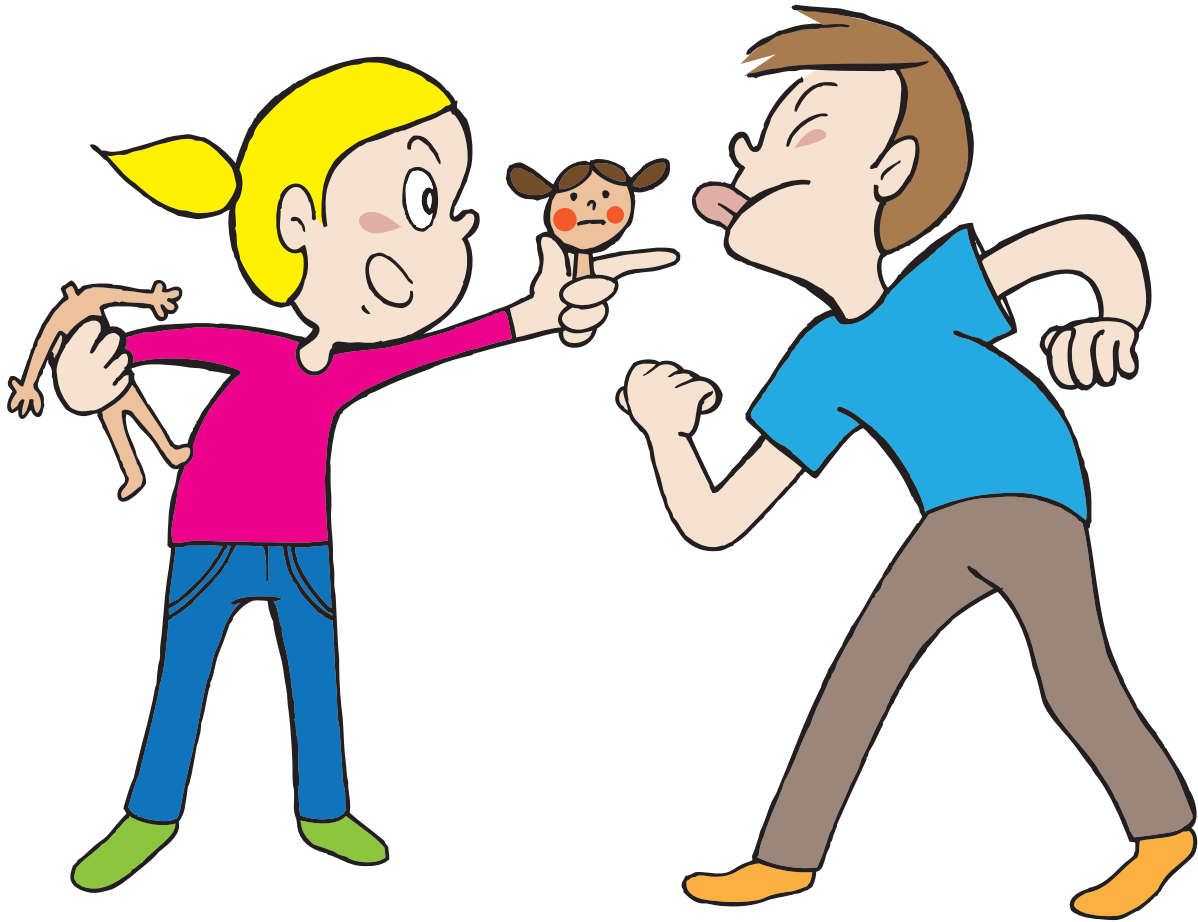


# Eating





## Regulating emotions

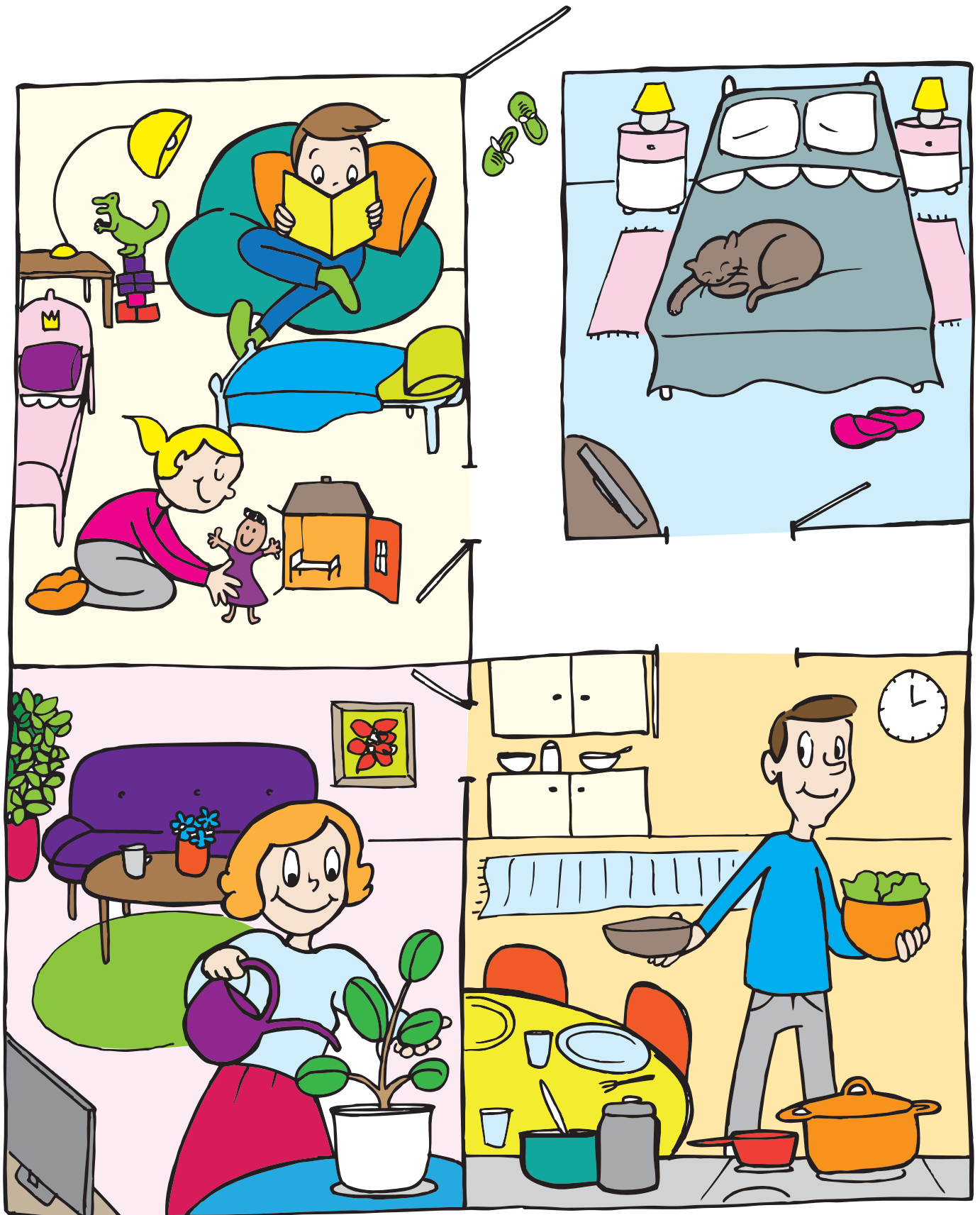




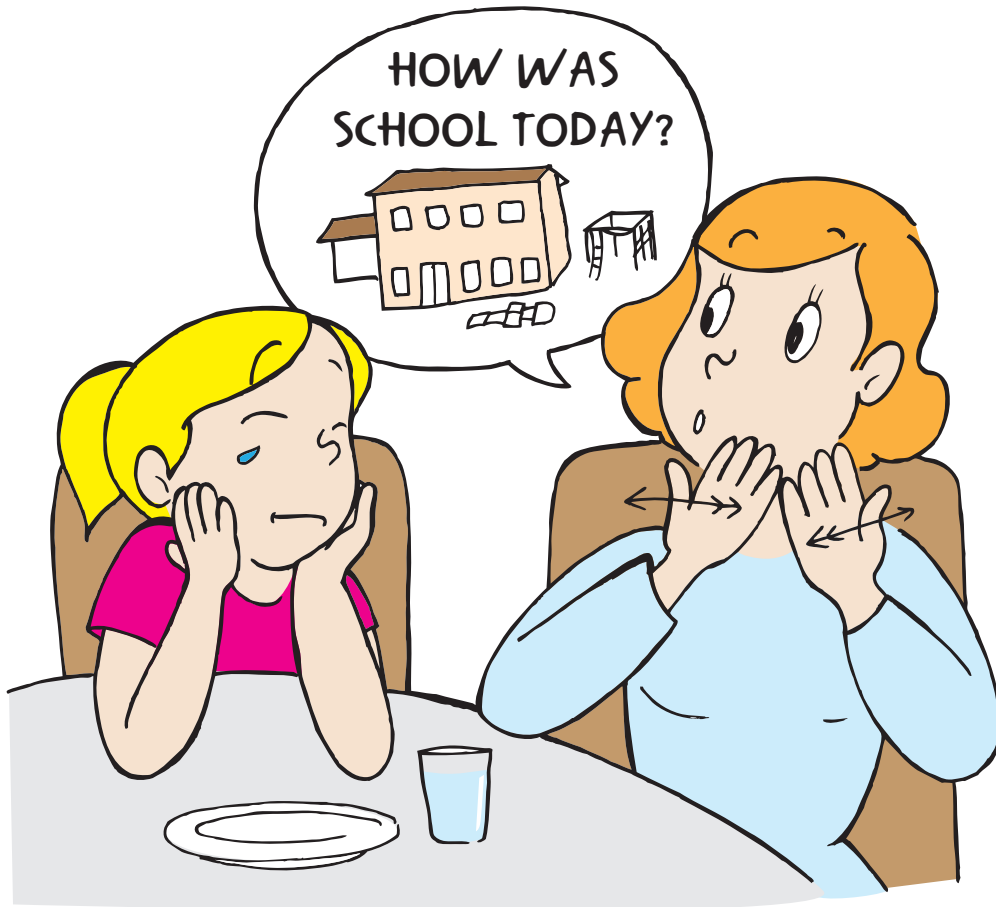
## Friends



## Housing



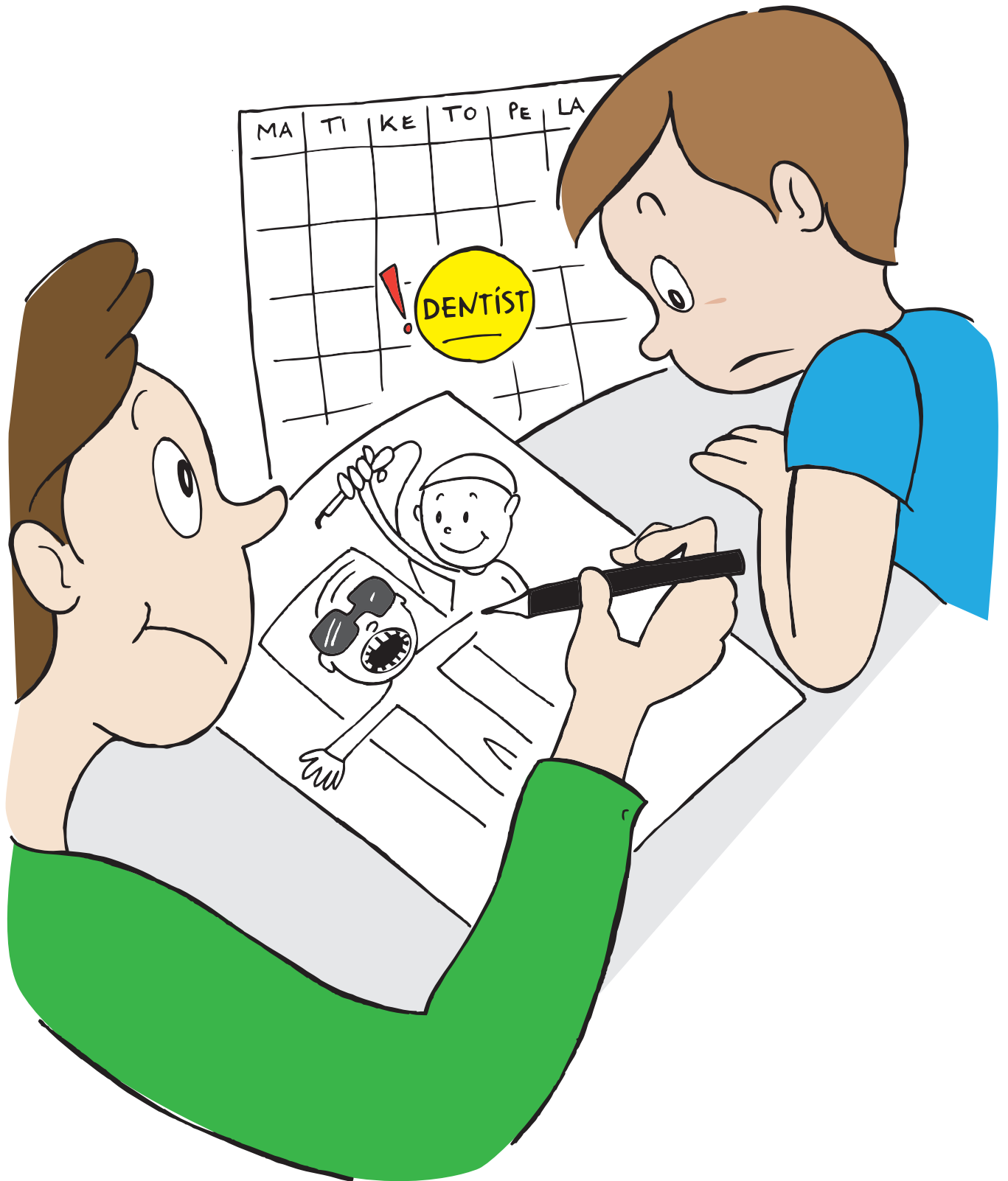
## Conversation



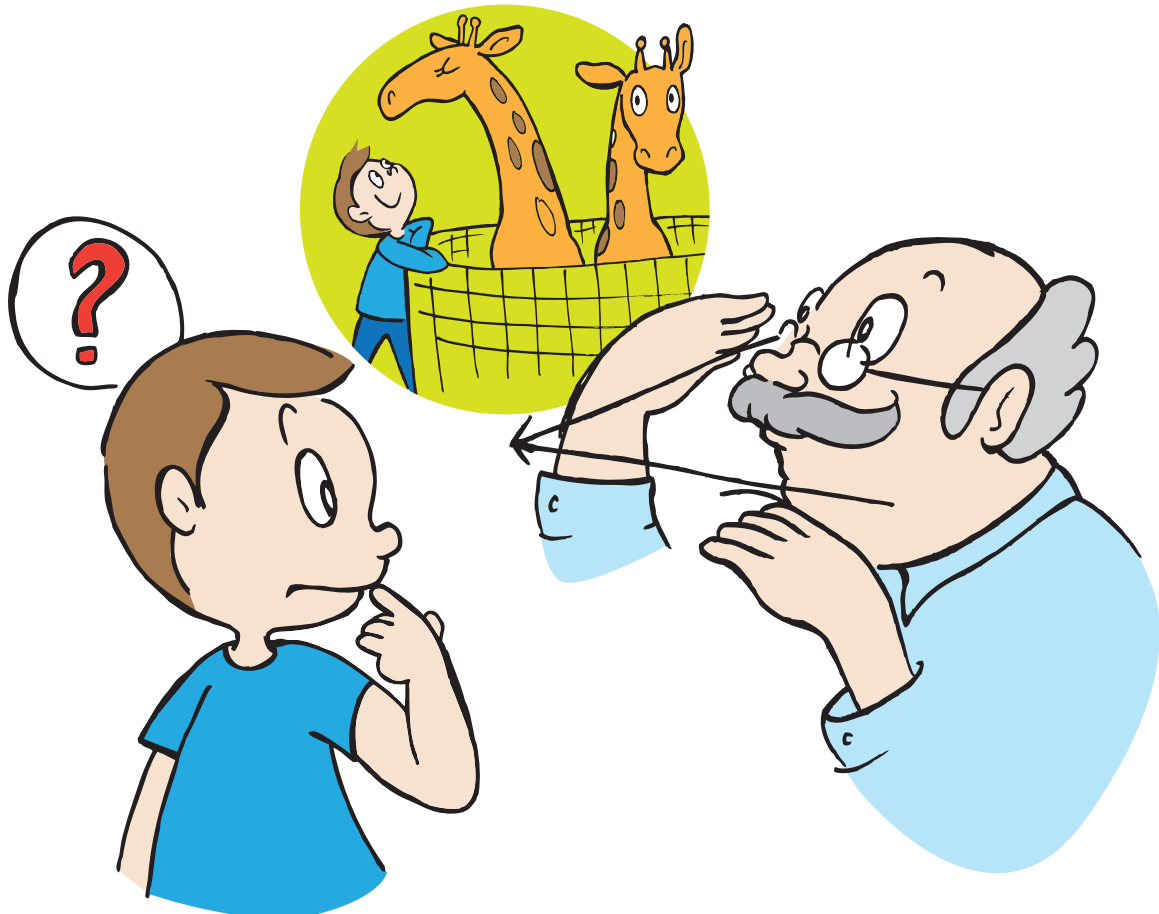
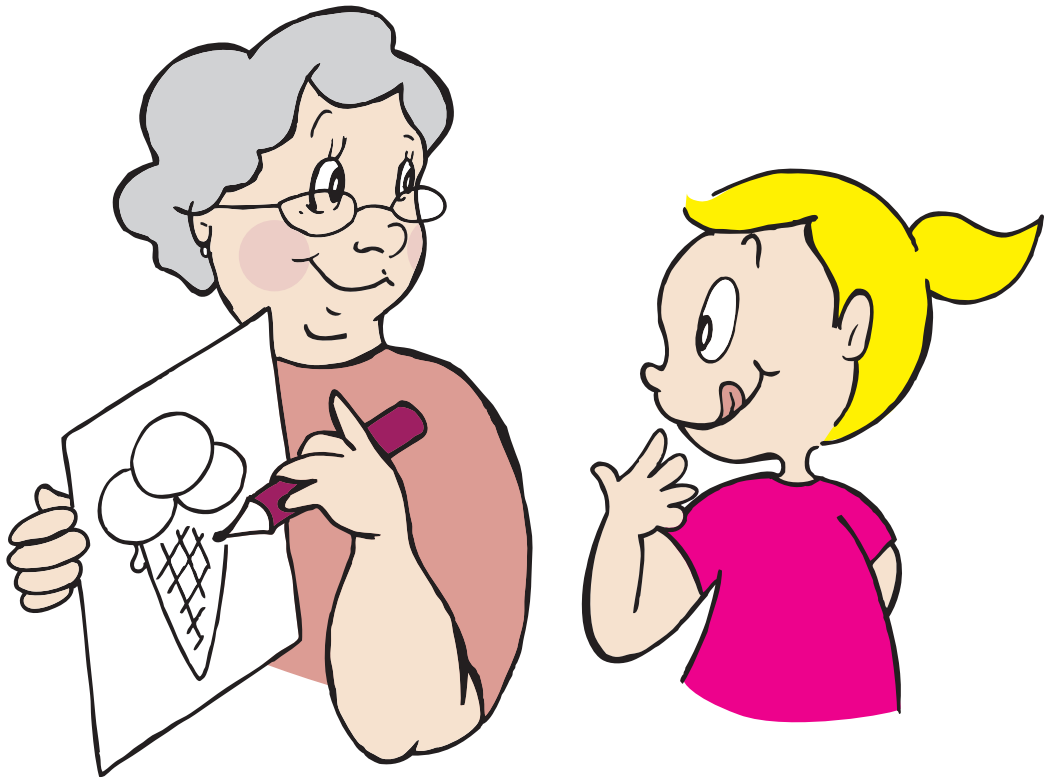
## Sleep



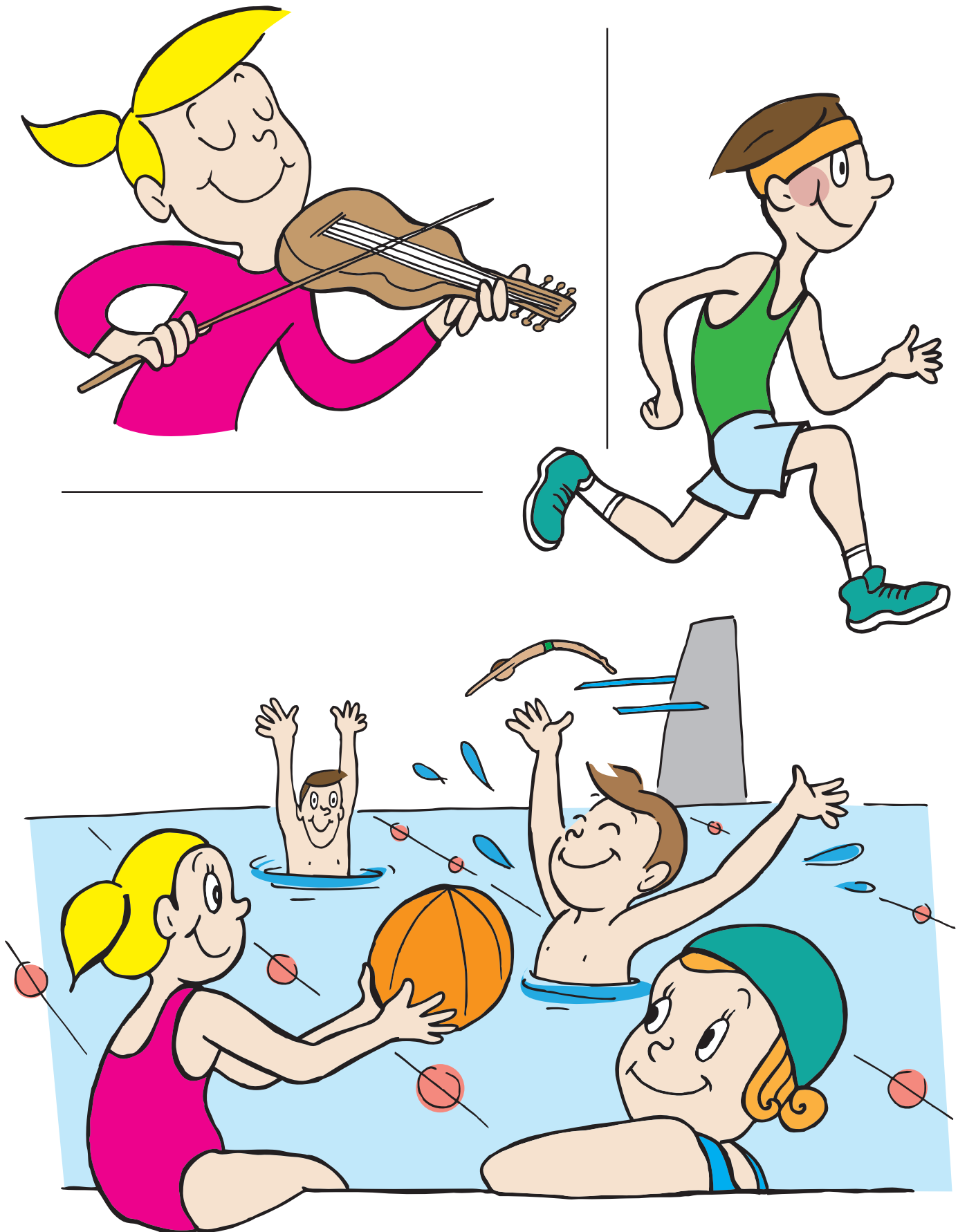
## Foreseight



## Support measures for communication with relatives and friends

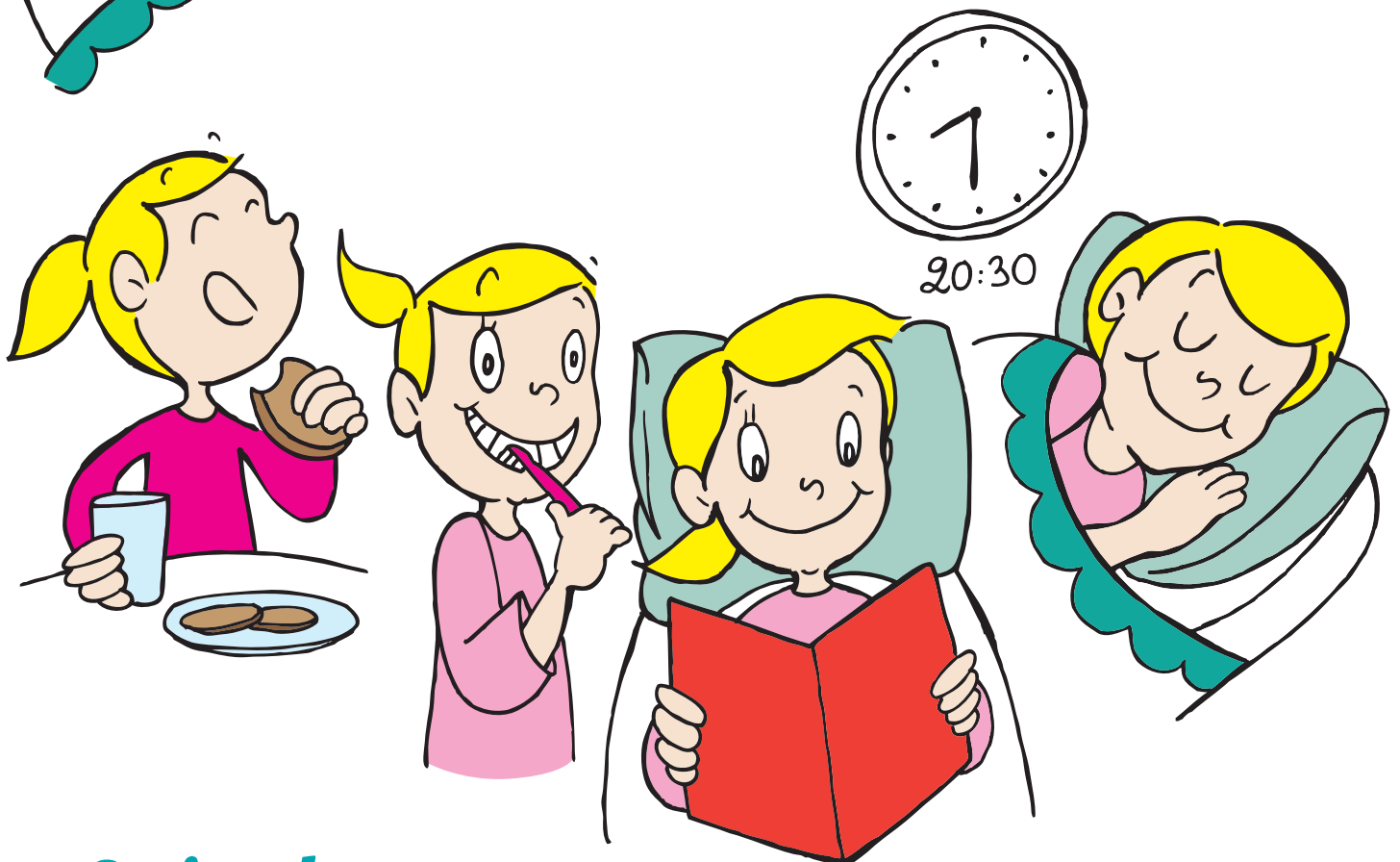
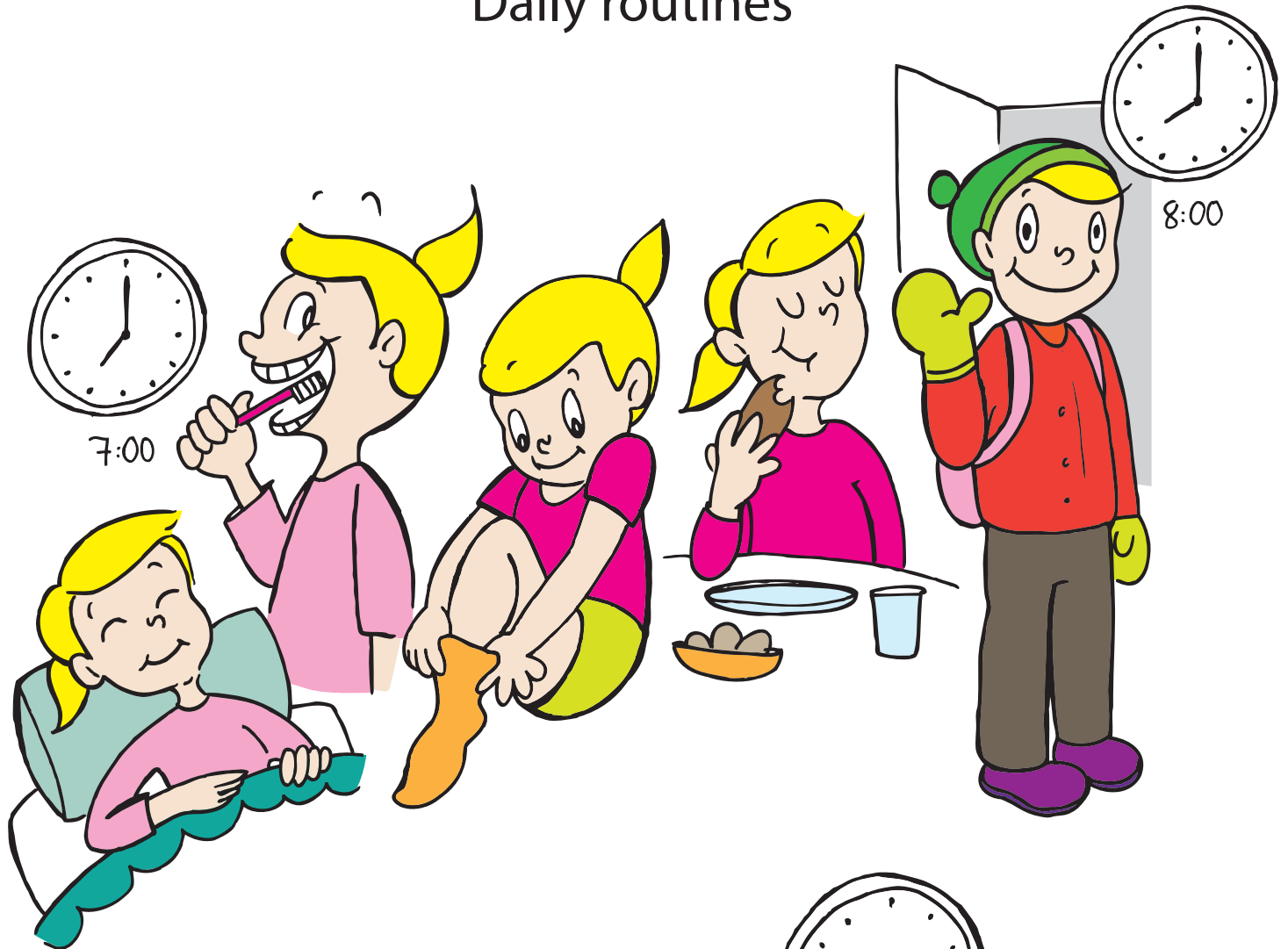


## Family members' hobbies





## Daily routines





## School



## Professional support

